

SERVICE EQUIPMENT CATALOG



PROFILE

ERAVCO, a division of Innovativz based in the USA is a leading provider of pressure switches, capacitors, service equipment & tools supporting the OEMs, Distributors, and Contractors in the Air-conditioning & Refrigeration Industry.

PRODUCT & TECHNOLOGY

- ERAVCO Service Equipment line includes Vacuum Pumps and Refrigerant Recovery Units compatible with R32.
- ERAVCO offers a complete line of pressure switches under its own brand “**BIKA**”. Manual & automatic reset fixed set-point cartridge technology that provides unparalleled performance over a wide range of environmental and electrical conditions.
- ERAVCO capacitor brand (**VACCAP**) line includes a complete line of motor run capacitors ranging from 2uF to 80uF; available in single & dual configuration, round and oval shapes, and a variety of universal voltages. **VACCAP** Capacitors are suitable for usage with single-phase reciprocating, rotary, and scroll type compressors, motors, and service equipment.

COMMITMENT TO QUALITY & SERVICE

ERAVCO is dedicated to providing high quality products at reasonable prices. Our experience staff is fully dedicated to offering the upmost support and achievable solutions to minimize the increasing cost that most customers are facing today.



Compact



Light Weight



Robust

EVP SERIES

- ◆ Single & Two Stage
- ◆ Dual Voltage - 110V/220V-1 50/60
- ◆ CE approved to directive 2014/30/EU
- ◆ Electromagnetic Compatibility | Safety



SINGLE STAGE

Model			EVP18S	EVP3S	EVP4S	EVP5S	EVP7S	EVP9S	EVP12S
Flow Rate & Speed	60 HZ	CFM	1.8	3.0	4.0	5.0	7.0	9.0	12.0
		Lit/Min	50	84	114	142	198	254	340
		RPM	1728	1728	3456	3456	3456	3456	3456
	50 HZ	CFM	1.5	2.5	3.5	4.5	6.0	8.0	10.0
		Lit/Min	42	70	100	128	170	226	283
		RPM	1440	1440	2880	2880	2880	2880	2880
Electrical	50/60HZ	VAC	220V/110V-1PH	220V/110V-1PH	220V/110V-1PH	220V/110V-1PH	220V/110V-1PH	220V/110V-1PH	220V/110V-1PH
		Ultimate Vacuum	Pa	5	5	5	5	5	5
			Microns	150	150	150	150	150	150
Horsepower	HP	1/4	1/4	1/3	1/3	1/2	3/4	1.0	
Inlet Port	Inches	1/4" Flare	1/4" Flare	1/4" Flare	1/4" Flare	1/4", 3/8" Flare	1/4", 3/8" Flare	1/4", 3/8" Flare	
Oil Capacity	mL	320	300	350	350	450	700	800	
	us fl oz	10.82	10.14	11.84	11.84	15.22	23.67	27.05	
Net Weight	Lbs.	11.6	12.1	14.3	15	22	30	32	
	Kg	5.3	5.5	6.5	6.8	10	14	14.5	
Dimensions (L*W*H)	Inches	10.6*4.7*8.5	10.6*4.7*8.5	10.9*4.7*8.5	10.9*4.7*8.5	12.6*5.3*9.1	14.6*5.5*9.8	15.4*5.5*9.8	
	mm	270*119*216	270*119*216	278*119*216	278*119*216	320*134*232	370*140*250	390*140*250	

TWO STAGE

Model			EVP2T	EVP3T	EVP4T	EVP5T	EVP7T	EVP9T	EVP12T
Flow Rate	60 HZ	CFM	1.8	3.0	4.0	5.0	7.0	9.0	12.0
		Lit/Min	50	84	114	142	198	254	340
		RPM	3456	3456	3456	3456	3456	3456	3456
	50 HZ	CFM	1.5	2.5	3.5	4.5	6.0	8.0	10.0
		Lit/Min	42	70	100	128	170	226	283
		RPM	2880	2880	2880	2880	2880	2880	2880
Electrical	50/60HZ	VAC	220V/110V-1PH	220V/110V-1PH	220V/110V-1PH	220V/110V-1PH	220V/110V-1PH	220V/110V-1PH	220V/110V-1PH
		Ultimate Vacuum	Pa	0.3	0.3	0.3	0.3	0.3	0.3
			Microns	25	25	25	25	25	25
Horsepower	HP	1/4	1/3	1/3	1/2	3/4	1.0	1.0	
Inlet Port	Inches	1/4" Flare	1/4" Flare	1/4", 3/8" Flare	1/4", 3/8" Flare	1/4", 3/8" Flare	1/4", 3/8" Flare	1/4", 3/8" Flare	
Oil Capacity	mL	180	280	360	350	700	600	700	
	us fl oz	6.09	9.47	12.17	11.84	23.67	20.29	23.67	
Net Weight	Lbs.	13.2	15.5	24.2	26	33	34.1	35.2	
	Kg	6	7	11	11.8	15	15.5	16	
Dimensions (L*W*H)	Inches	10.6*4.7*8.5	10.9*4.7*8.5	12.6*5.3*9.1	12.6*5.3*9.1	14.6*5.5*9.8	14.6*5.5*9.8	15.4*5.5*9.8	
	mm	270*119*216	278*119*216	320*134*232	320*134*232	370*140*250	370*140*250	390*140*250	

EVR SERIES



- ◆ Single & Two Stage
- ◆ Dual Voltage - 110V/220V-1 50/60
- ◆ CE approved to directive 2014/30/EU
- ◆ Electromagnetic Compatibility | Safety
- ◆ R32 Compliant



SINGLE STAGE

Model			EVR2S	EVR3S	EVR4S	EVR5S	EVR7S	EVR9S	EVR12S
Flow Rate & Speed	60 HZ	CFM	1.8	3.0	4.0	5.0	7.0	9.0	12.0
		Lit/Min	50	84	114	142	198	254	340
		RPM	1728	1728	3456	3456	3456	3456	3456
	50 HZ	CFM	1.5	2.5	3.5	4.5	6.0	8.0	10.0
		Lit/Min	42	70	100	128	170	226	283
		RPM	1440	1440	2880	2880	2880	2880	2880
Electrical	50/60HZ	VAC	220V-1PH	220V-1PH	220V-1PH	220V-1PH	220V-1PH	220V-1PH	220V-1PH
Ultimate Vacuum		Pa	5	5	5	5	5	5	5
		Microns	150	150	150	150	150	150	150
Horsepower		HP	1/4	1/4	1/3	1/3	1/2	3/4	1.0
Inlet Port		Inches	1/4" Flare	1/4" Flare	1/4" Flare	1/4" Flare	1/4", 3/8" Flare	1/4", 3/8" Flare	1/4", 3/8" Flare
Oil Capacity		mL	320	300	350	350	450	700	800
		us fl oz	10.82	10.14	11.84	11.84	15.22	23.67	27.05
Net Weight		Lbs.	11.6	12.1	14.3	15	22	30	32
		Kg	5.3	5.5	6.5	6.8	10	14	14.5
Dimensions (L*W*H)		Inches	10.6*4.7*8.5	10.6*4.7*8.5	10.9*4.7*8.5	10.9*4.7*8.5	12.6*5.3*9.1	14.6*5.5*9.8	15.4*5.5*9.8
		mm	270*119*216	270*119*216	278*119*216	278*119*216	320*134*232	370*140*250	390*140*250

TWO STAGE

Model			EVR2T	EVR3T	EVR4T	EVR5T	EVR7T	EVR9T	EVR12T
Flow Rate	60 HZ	CFM	1.8	3.0	4.0	5.0	7.0	9.0	12.0
		Lit/Min	50	84	114	142	198	254	340
		RPM	3456	3456	3456	3456	3456	3456	3456
	50 HZ	CFM	1.5	2.5	3.5	4.5	6.0	8.0	10.0
		Lit/Min	42	70	100	128	170	226	283
		RPM	2880	2880	2880	2880	2880	2880	2880
Electrical	50/60HZ	VAC	220V-1PH	220V-1PH	220V-1PH	220V-1PH	220V-1PH	220V-1PH	220V-1PH
Ultimate Vacuum		Pa	3x10 ⁻¹	3x10 ⁻¹	3x10 ⁻¹	3x10 ⁻¹	3x10 ⁻¹	3x10 ⁻¹	3x10 ⁻¹
		Microns	25	25	25	25	25	25	25
Horsepower		HP	1/4	1/3	1/3	1/2	3/4	1.0	1.0
Inlet Port		Inches	1/4" Flare	1/4" Flare	1/4", 3/8" Flare	1/4", 3/8" Flare	1/4", 3/8" Flare	1/4", 3/8" Flare	1/4", 3/8" Flare
Oil Capacity		mL	180	280	360	350	700	600	700
		us fl oz	6.09	9.47	12.17	11.84	23.67	20.29	23.67
Net Weight		Lbs.	13.2	15.5	24.2	26	33	34.1	35.2
		Kg	6	7	11	11.8	15	15.5	16
Dimensions (L*W*H)		Inches	10.6*4.7*8.5	10.9*4.7*8.5	12.6*5.3*9.1	12.6*5.3*9.1	14.6*5.5*9.8	14.6*5.5*9.8	15.4*5.5*9.8
		mm	270*119*216	278*119*216	320*134*232	320*134*232	370*140*250	370*140*250	390*140*250

EVS SERIES

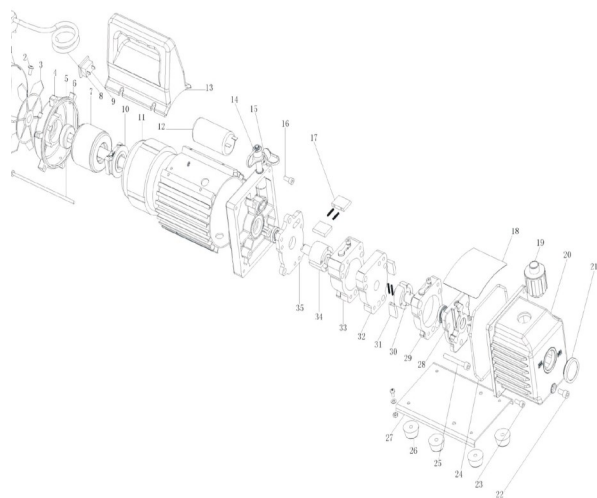
- ◆ Single & Two Stage
- ◆ Dual Voltage - 110V/220V-1 50/60
- ◆ CE approved to directive 2014/30/EU
- ◆ Electromagnetic Compatibility | Safety



Model	EVS15	
Flow Rate & Speed	CFM	1.5
	Lit/Min	42
	RPM	2880
Electrical - 50/60HZ	VAC	220V-1PH
Ultimate Vacuum	Pa	5
Horsepower	HP	1/4
Inlet Port	Inches	1/4" Flare
Oil Capacity	mL	230
	us fl oz	7.78
Net Weight	Lbs.	8.1
	Kg	3.7
Dimensions (L*W*H)	Inches	9.6*4.0*7.1
	mm	245*101*180

EXPLODED DRAWING

- | | |
|----|---------------------------|
| 1 | Fan cover |
| 2 | Cross screw |
| 3 | Fan cover |
| 4 | Motor cover |
| 5 | Cross screw |
| 6 | Bearing |
| 7 | Rotor |
| 8 | Power supply |
| 9 | Power switch |
| 10 | Centrifugal switch |
| 11 | Stator |
| 12 | Capacitor |
| 13 | Handle |
| 14 | Inlet fitting |
| 15 | Trestle |
| 16 | Screw |
| 17 | Front rotary vane |
| 18 | Cap board |
| 19 | Exhaust/oil inlet fitting |
| 20 | Die cast aluminum housing |
| 21 | Sight glass |
| 22 | Oil drain cap |
| 23 | Screw |
| 24 | Seal |
| 25 | Screw |
| 26 | Rubber grommet foot |
| 27 | Base |
| 28 | Back - pump cover |
| 29 | Back - pump body |
| 30 | Back - pump rotor |
| 31 | Back - rotary vane |
| 32 | Middle fence |
| 33 | Front - pump body |
| 34 | Front - pump rotor |
| 35 | Front cover |



FEATURES

- Compact, Light weight, Durable
- Oil-less compressor
- Multiple Refrigerants
- Self-clearing & Purge function
- 4 - Pole motor
- CE approved

EC SERIES

ERAVCO Model		EC25	EC50
Refrigerants		CFC, HCFC, HFC	
Compressor		Oil-less Reciprocating	
Power Source		100/240V-1PH, 50/60Hz	
Motor Size		3/4HP	1HP
Motor Speed		1450 rpm@50HZ 1750rpm @60Hz	
Auto reset (High Pressure Shut-off)		558 PSI 38.5bar 3850kPa	
Operating Temperature		32° to 104° F (0° to 40° C)	
Recovery Rate (lbs kg/min)	Vapor	0.25 0.55	1.1 0.50
	Liquid	1.8 3.97	3.6 7.9
	Push/Pull	6 13.2	22 10
Dimensions Inch mm		15.75*9.8*14.2 400*250*360	
Net Weight (Lbs Kg)		29.7 13.5	32 14.5



ER SERIES



ERAVCO Model		ER25	ER50
Refrigerants		R12,R134a ,R401C,R406A,R500,1234YF,R22,R401A,R401B, R402B.R407C,R407D,R408A,R409A,R411A,R411B,R412A, R502,R509,R409A,R411A,R411B,R412A,R509,R402A,R404 A,R407A,R407B,R410A,R507,R32	
Compressor		Oil-less Reciprocating-Air cooled	
Power Source		100/120V-1/60HZ 220/240V-1 (50/60HZ)	
Motor Size		3/4HP	1HP
Motor Speed		1450 rpm@50HZ 1750rpm @60Hz	
Auto reset (High Pressure Shut-off)		558 PSI 38.5bar 3850kPa	
Operating Temperature		32° to 104° F (0° to 40° C)	
Recovery Rate (lbs kg/min)	Vapor	0.25 0.55	1.1 0.50
	Liquid	1.8 3.97	3.6 7.9
	Push/Pull	6 13.2	22 10
Dimensions Inch mm		15.75*9.8*13.9 400*250*355	
Net Weight (Lbs Kg)		29.7 13.5	32 14.5



**Your Air-Conditioning & Refrigeration
Global Resource**



**Please contact us for a list of Authorized
Distributors in your area at
eravco@innovativz.com**

